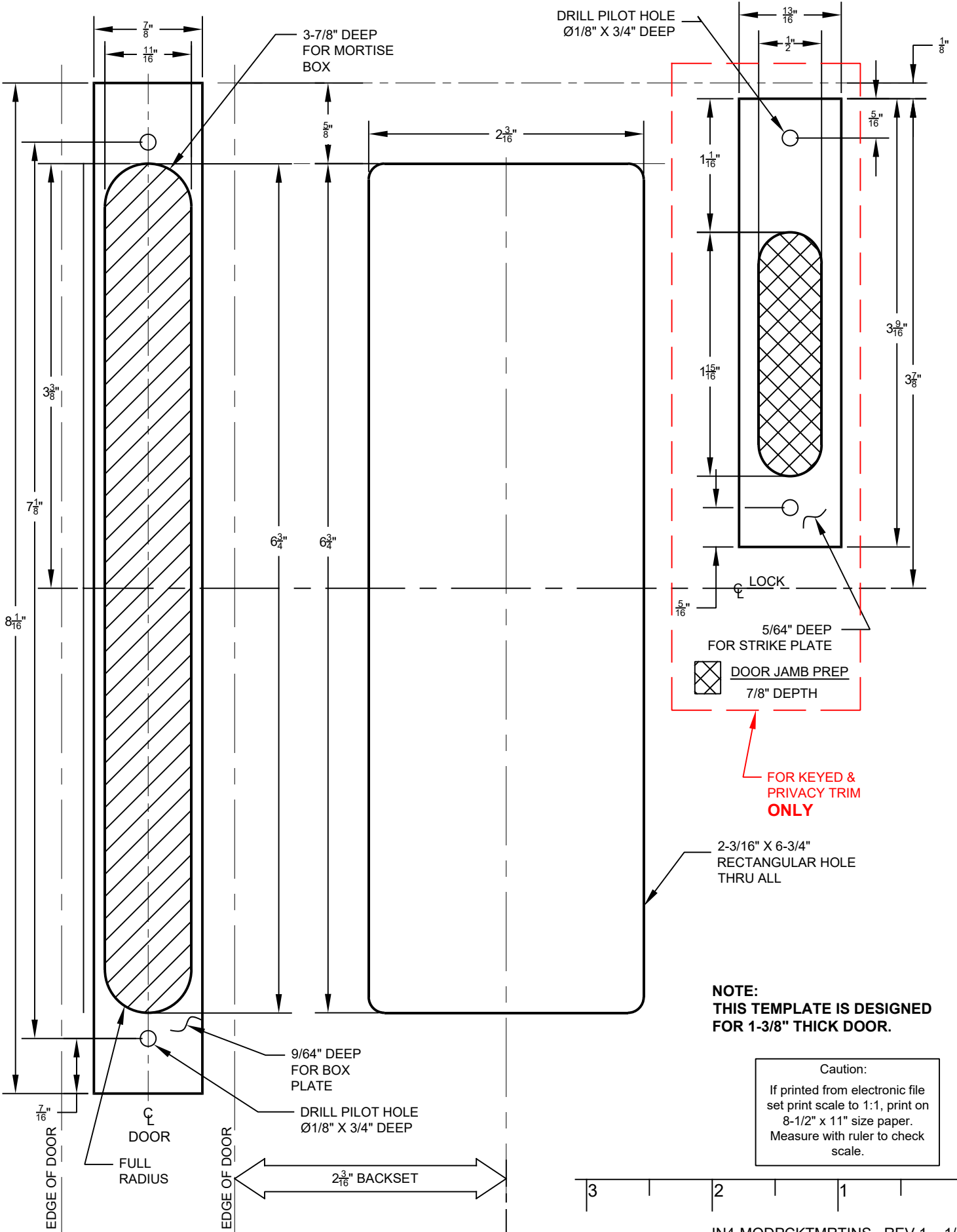


MODERN RECTANGULAR & SANDCAST BRONZE RUSTIC MODERN POCKET MORTISE DOOR PREPARATION TEMPLATE



MODERN RECTANGULAR & SANDCAST BRONZE RUSTIC MODERN POCKET MORTISE

PM

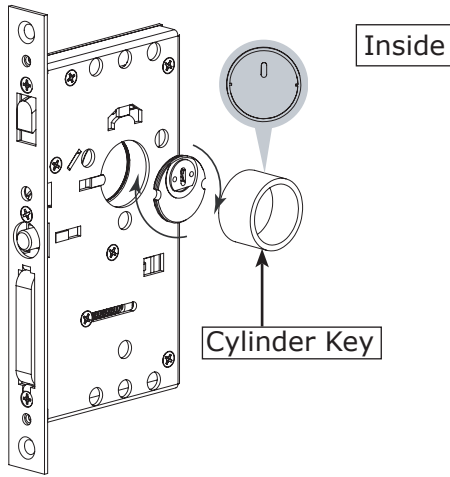
MODERN RECTANGULAR & SANDCAST BRONZE RUSTIC MODERN POCKET MORTISE

PM

3
2
1
0

1. Thread Drive Bar Cylinder

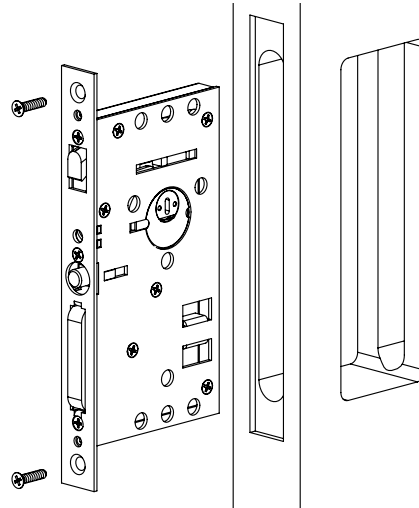
Use **Cylinder Key** to thread Drive Bar Cylinder clockwise on **interior side** of door.



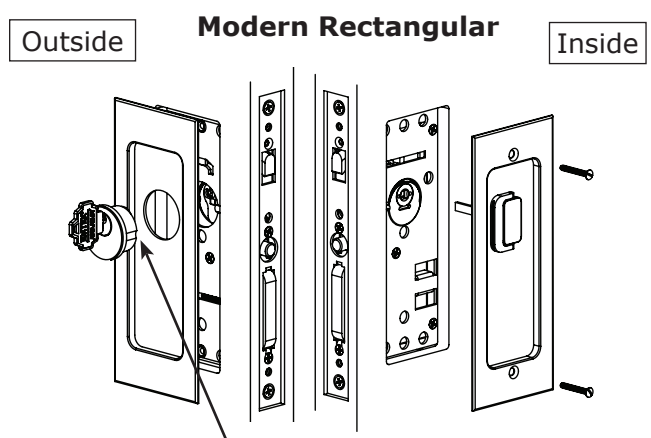
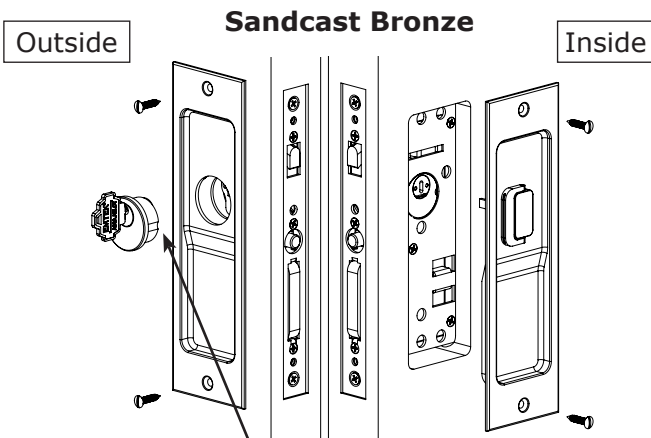
Note: Notches on cylinder must be parallel with the horizontal plane when screwed flush into lock body.

2. Install Lock Body

Inside



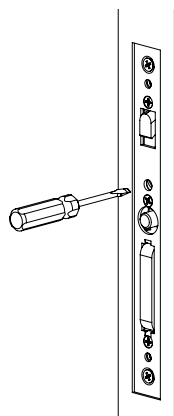
3. Install outside and inside plates



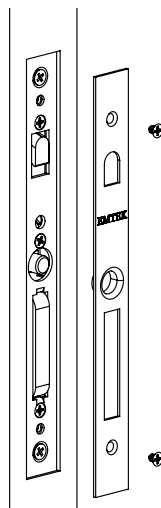
Install Key Cylinder by threading it clockwise onto lock body plate
Key Cylinder notch must be at the horizontal position when fully screwed in lock body.

4. Tighten Drive Bar Cylinder

Tighten locking screw to engage notch on cylinder

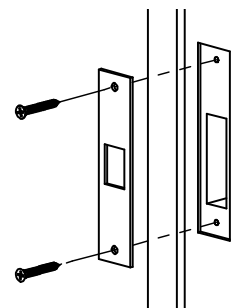


5. Install Trim Plate



6. Install Door Jamb

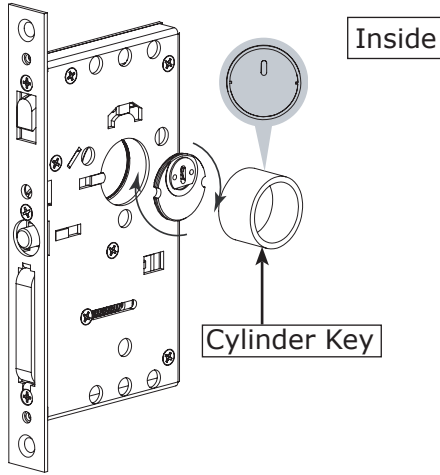
Drill two 7/64" pilot holes



See template for door jamb prep specifications

1. Thread Drive Bar Cylinder

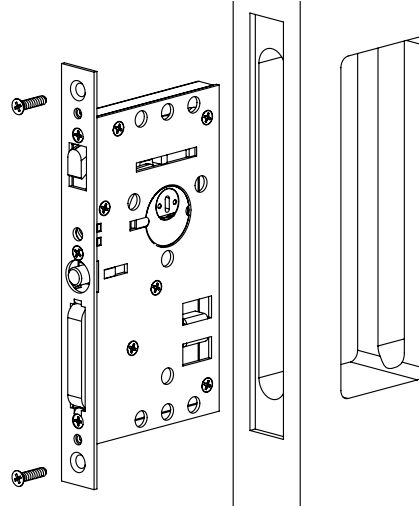
Use **Cylinder Key** to thread Drive Bar Cylinder clockwise on **interior side** of door.



Note: Notches on cylinder must be parallel with the horizontal plane when screwed flush into lock body.

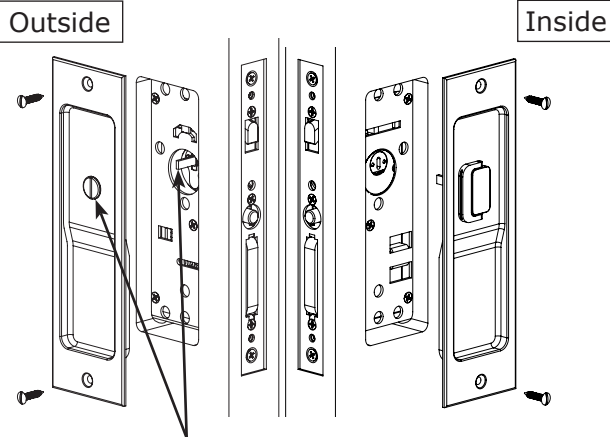
2. Install Lock Body

Inside

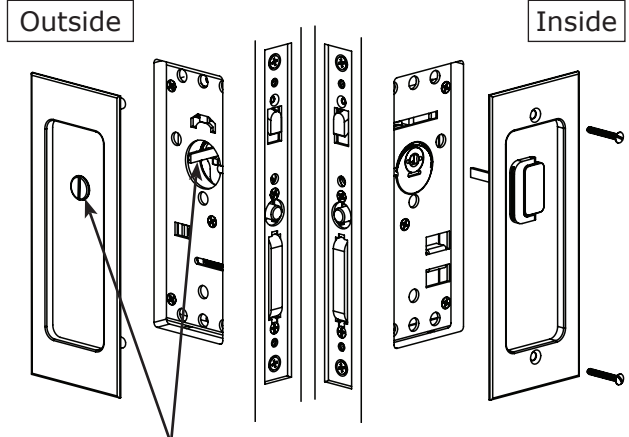


3. Install outside and inside plates

Sandcast Bronze



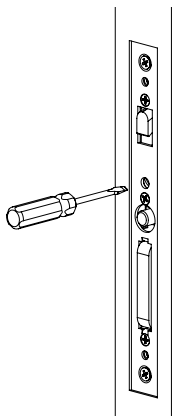
Modern Rectangular



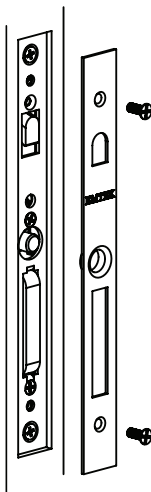
Align Passage/Privacy Button with Thumb-Turn tail piece and secure trim plates to door.

4. Tighten Drive Bar Cylinder

Tighten locking screw to engage notch on cylinder

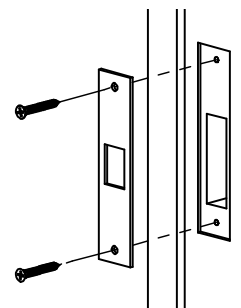


5. Install Trim Plate



6. Install Door Jamb

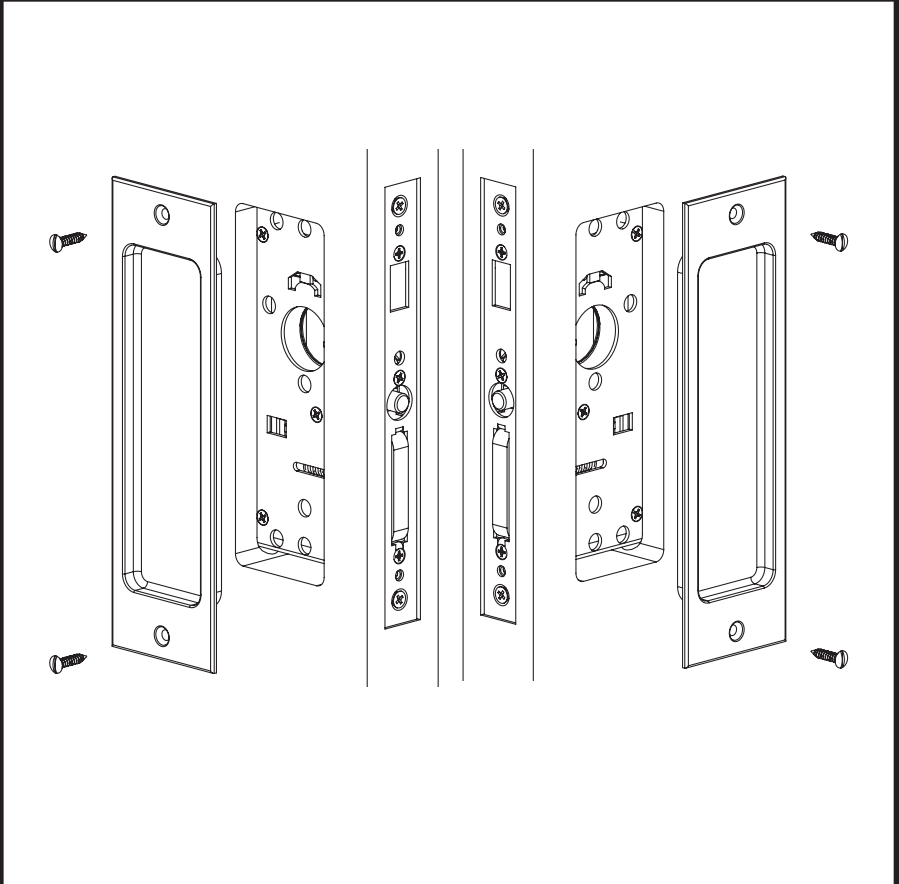
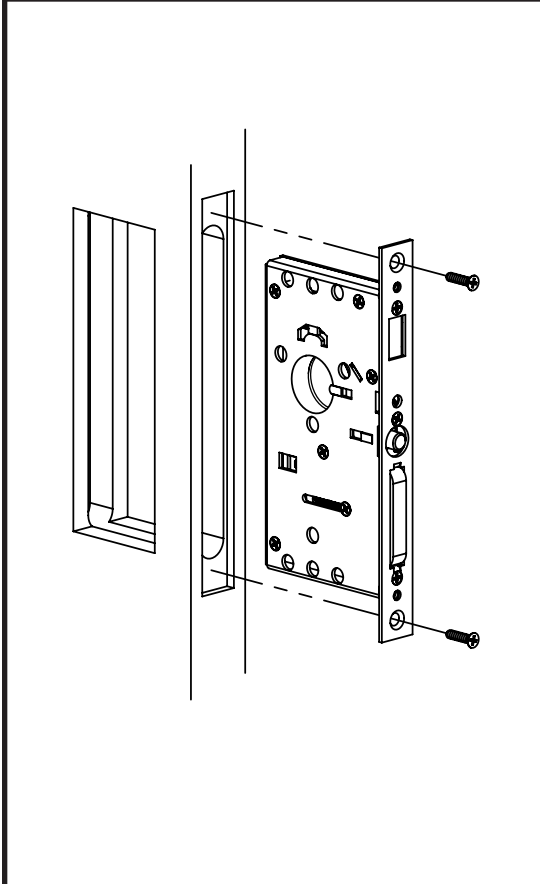
Drill two 7/64" pilot holes



See template for door jamb prep specifications

1. Install Lock Body

2. Install Inside and Outside Plates: Sandcast Bronze



2. Install Inside and Outside Plates: Modern Rectangular

3. Install Trim Plate

